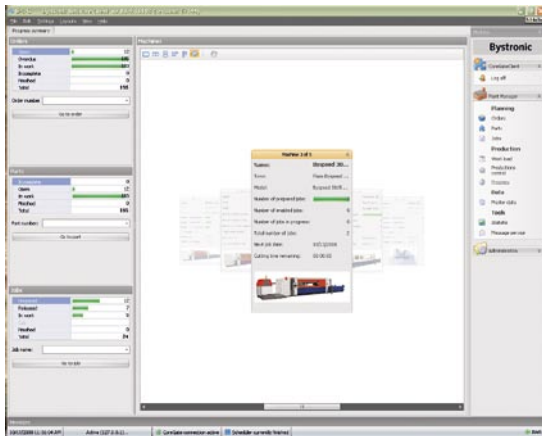
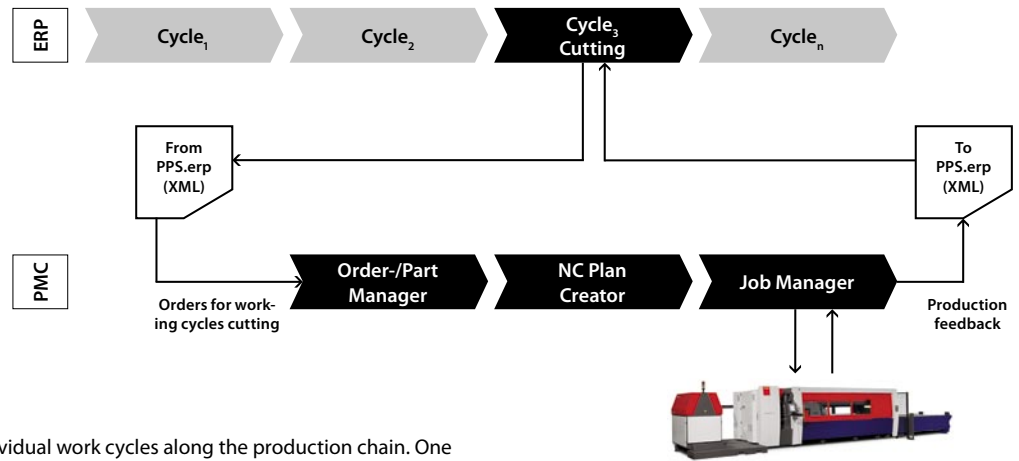


## Plant Manager Cutting – unrivalled, efficient, transparent

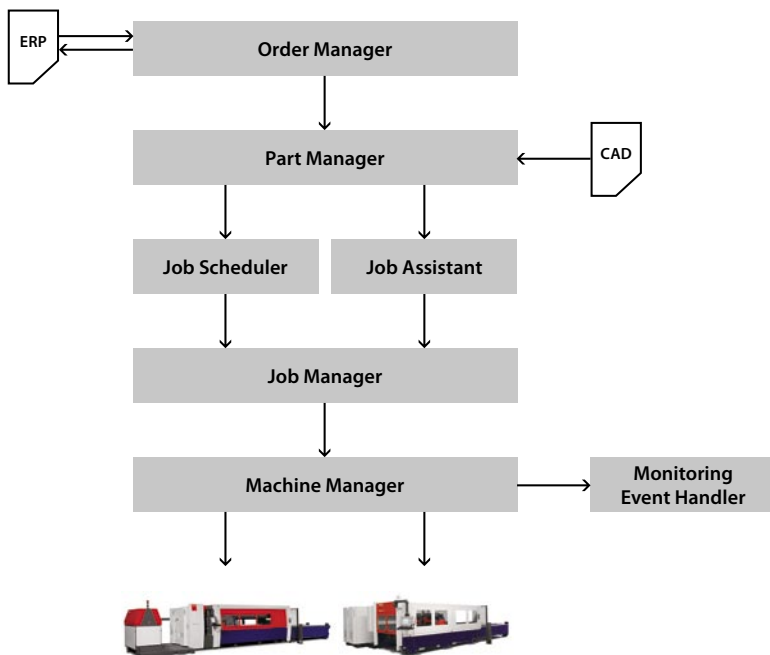


The Plant Manager Cutting (PMC) is the very latest module for Bysoft, the simple-to-operate and high performance CAD/CAM solution from Bystronic. It is a unique tool for the automatic and fact-based planning and monitoring of all laser cutting and waterjet cutting processes. The PMC independently extracts data from the ERP system and geometries from the CAD program and automatically prepares consistent cutting plans. These are allocated to the machines based upon the specification and the available machine capacity. The module is an optional extra and is particularly worthwhile for customers who handle a large volume of parts or who have a broad spectrum of materials and parts: It ensures the highest level of productivity and provides virtually instant access to all relevant production and machine data such as capacity utilization, order status and delivery schedule information.



### Operating principle

Every ERP system is divided into individual work cycles along the production chain. One of these cycles is the outline planning of the cutting processes. It is here that the PMC is applied and it refines this planning. Thus individual production steps, costs, and time can be saved and error sources effectively eliminated.



- The Order Manager extracts the order data from the ERP and transmits them to the Part Manager where they are linked to the CAD data.
- Subsequently these data are passed to the Job Scheduler which uses them to create an optimal cutting plan. These functions can also be executed manually using the Job Assistant.
- The management of the cutting plans is handled by the Job Manager. The current status of all cutting systems is available to the user at any time at the touch of a button.
- All the machine data are registered in the Machine Manager where they are professionally and meaningfully processed.
- In parallel, the Machine Monitoring monitors the cutting systems and upon the occurrence of certain events generates the appropriate message(s) in accordance with defined regulations.

## Customer benefits

- No time required for creating the cutting plans thanks to the automated processing of order data and CAD data coupled with feedback of the production data
- Increase in profits thanks to unrivalled efficiency and transparency in order processing, guaranteed delivery schedules and planning that is independent of the operator's knowledge
- Optimal usage of material and machines as well as maximum process reliability
- Availability of transparent and traceable production data at all times
- Reduced non-productive time that is the result of cutting head and nozzle changes thanks to the optimal combination of orders
- Efficient resource management including easy planning of the maintenance intervals

## Your contact

[www.bystronic.com](http://www.bystronic.com)